

Industrial IoT Gateway

To remotely control and monitor your equipment/sensors from a distance without visiting on-site.



SIG-5430
4 AI ports
Modbus/TCP



SIG-5440
4 DI ports (Wet or Dry contact)
Modbus/TCP



SIG-5450
2 DO ports (NO and NC output)
Modbus/TCP



SIG-5560
Temperature gateway
Modbus/TCP



SIG-5600
4 AI, 4 DI and 4 DO ports
Modbus/TCP

IoT Gateway for Cloud

To control and monitor your equipment via a web-user interface from Sollae Cloud.



SIG-5431
4 AI ports
MQTT over TLS, Sollae Cloud



SIG-5441
4 DI ports, Wet or Dry contact
MQTT over TLS, Sollae Cloud



SIG-5451
2 DO ports (NO and NC output)
MQTT over TLS, Sollae Cloud



SIG-5561
Temperature gateway
MQTT over TLS, Sollae Cloud



SIG-5601
4 AI, 4 DI and 4 DO ports
MQTT over TLS, Sollae Cloud

Console Server

To facilitate real-time remote control and monitoring.



SCG-5608
8 ports (RS232 w/ RJ45 connector)
TLS v1.2, IPv4 and IPv6



CSE-T16
16 ports
(RS232 w/ RJ45 connector)



CSE-T32
32 ports
(RS232 w/ RJ45 connector)

Serial Ethernet Device Server

To control and monitor serial devices over the network.



CSE-H53N
1 port (RS232)
IPv4/IPv6 dual stack
Multi-connection



CSE-H55N2
1 port (RS422/485)
IPv4/IPv6 dual stack
High noise immunity



CSE-H21
2 ports (RS232)
High noise immunity



CSC-H64
4 ports (RS232/422/485)
IPv4/IPv6 dual stack
Ethernet, Wireless LAN



SCG-5608
8 ports
(RS232 w/ RJ45 connector)
TLS v1.2, IPv4 and IPv6

Serial Ethernet Module

To control and monitor serial devices over the network.



CSE-M53G
1 port (UART)
IPv4/IPv6 dual stack



CSE-M73G
1 port
(3.3V CMOS, RS232/422/485)
Multi-monitoring (8 channels)



CSE-B63G
1 port (RS232/485)
IPv4/IPv6 dual stack

Modbus Gateway

To allow Modbus devices with different interfaces to communicate with HMI.



SMG-5400
RS232/422/485
Wireless LAN



SMG-5410
RS232
10Base-T/100Base-TX Ethernet



SMG-5420
RS422/485
10Base-T/100Base-TX Ethernet

Serial WLAN Device Server

To control and monitor serial devices over the network.



CSW-H85N
1 port (RS232/422/485)
IEEE 802.11 b/g
Soft AP, Multi-monitoring
WPA Enterprise
IPv4/IPv6 dual stack



CSW-H85F
1 port (RS232/422/485)
IEEE 802.11 b/g
Soft AP, Wireless RSSI
WPA Enterprise
IPv4/IPv6 dual stack



CSW-H85K2
1 port (RS232/422/485)
IEEE 802.11 b/g
Soft AP, Wireless RSSI
WPA Enterprise
IPv4/IPv6 dual stack



CSC-H64
4 ports (RS232/422/485)
IPv4/IPv6 dual stack
Ethernet, Wireless LAN

Remote I/O Gateway

To monitor various sensors and control power, motors, or actuators remotely via the Internet.



CIE-H10G
8 DI ports, 8 DO ports
Modbus/TCP or HTTP



CIE-H12G
2 DI ports (Wet or Dry contact)
1 DO port
Modbus/TCP or HTTP



CIE-H14G
4 DI ports, 4 DO ports
Modbus/TCP or HTTP
DC 8.5-38V

I/O Networking Module

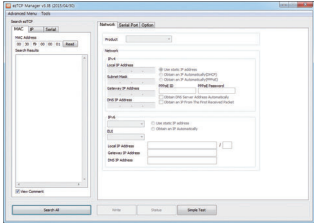
To monitor various sensors and control power, motors, or actuators remotely via the Internet.



CIE-M10A
8 DI ports, 8 DO ports, 1 ADC port
Modbus/TCP or HTTP

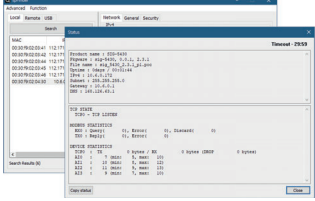
Software

ezManager ezManager is a software needed for using ezTCP products.



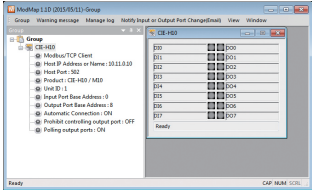
- What ezManager does :**
- Configuration change (e.g., IP Address)
 - Information and status check
 - Firmware change
- ezManager has merits such as :**
- Simple and easy to use for anyone without installation
 - Manages devices in local/remote network
 - Compatible with Windows

spFinder spFinder is the tool needed for using Sollae Gateway products.



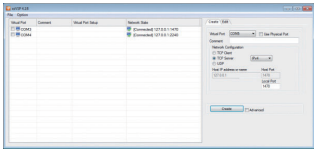
- What spFinder does:**
- Working parameters configuration
 - Information and status check
 - Firmware/Package update
- spFinder has merits such as:**
- Easy to use
 - Simple to monitor and manage devices in local/remote network
 - Compatible with Windows OS

ModMap ModMap is a software for the management of remote I/O devices.



- What ModMap does :**
- Manages multiple remote I/O devices with Modbus/TCP
 - Supports Modbus/TCP functions for maintaining devices
- ModMap has merits such as :**
- Manages and handles multiple devices
 - Pre-loaded with functions for the user's convenience
 - Pulse shape output
 - Script
 - Backup/Restore
 - Warning message

ezVSP ezVSP is a software for converting Serial to TCP/IP on a PC.



- What ezVSP does :**
- Allows legacy serial software to work without modifying the serial program
 - Manages virtual COM port (max. 255) on a PC
- ezVSP has merits such as :**
- Supports various communication modes (TCP Server/Client, UDP)
 - Creates and handles multiple virtual COM ports

Global Partners



Sollae Systems has been developing and providing embedded networking solutions for serial devices over 24 years with 24 worldwide partners.

- Argentina** | EtherPower SRL
www.etherpower.net
- Australia** | IoT Store
www.iot-store.com.au
- China** | Beijing Yubohua Technology
www.yubohua.com
- France** | LEXTRONIC
www.lextronic.fr/R1234-sollae.html
- Israel** | BZ-COM LTD
www.bz-com.com
- Japan** | ALPHA PROJECT CO.LTD.
www.apnet.co.jp
- Netherlands** | Antratek Electronics
www.antratek.nl
- Portugal** | ELECTRONICA INDUSTRIAL
www.electronicaindustrial.pt
- Singapore** | SPEEDCOM Asia Pacific
Tel : +65 88189700
- Spain** | ASTELO COMUNICACIÓN S.L.
www.astelo.es
- Switzerland** | Bernhard Elektronik
www.elmicro.com/contact/ch
- UK** | Equinox Technologies UK Ltd.
www.equinox-tech.com/products/manufacture.asp?ID=43
- Austria** | MEGATON Ges.m.b.H.
www.elmicro.com/contact/at
- Belgium** | Antratek Electronics
www.antratek.be
- Czech Republic** | HW server, s.r.o.
www.obchod.hw.cz
- Germany** | Elektronikladen Microcomputer
<http://elmicro.com/de/eztcp.html>
- Italy** | Area SX s.r.l.
www.eztcp.it
- Lithuania** | Milgeda
www.milgeda.lt/sollae
- Poland** | ELFAN s.c.
www.elfan.pl/eztcp
- South Africa** | SH3ISQUARED TRADING CC
www.H3iSquared.com
- Romania** | G.B.T. Impex S.R.L.
www.cantareindustriale.com
- Sweden** | LAWICEL AB
www.lawicel-shop.se
- Thailand** | Code Connex Co. Ltd.
www.codeconnex.com
- USA** | Envistia Mail
www.envistiamail.com



#901, 869, Gyeongwon-daero, Michuhol-gu, Incheon 22134, Korea (Republic Of)
Tel. +82 32 245 2323 | Fax. +82 32 245 2327 | Email. sales@ezTCP.com



ezTCP
The best solution for anyone who wants to connect devices to the Internet easily

